

# ChamClad



by

 DIVISION OF  
AMERILUX INTERNATIONAL



**INTERIOR &  
EXTERIOR  
WALLS, SOFFIT,  
CEILING & TRIM**

**EZPVCNA.COM**  
for more information contact  
us at [info@ezpvcna.com](mailto:info@ezpvcna.com)



1212 Enterprise Drive, De Pere, WI 54115  
Phone: 888-602-4441 | [www.AmeriLux.com](http://www.AmeriLux.com)

# THE CHAMCLAD WAY

ChamClad exterior and interiors walls, soffit and ceiling panels are transforming architectural design and building practices across North America.

Our Canadian made product is designed to be the ideal product choice for applications requiring durability, low maintenance and easy installation. With no special tools required for install.

Our films have 35 years proven performance in the EXTERIOR industry and offer the most realistic wood grains, metallic, and anodized finishes on the market. Additional benefits include superior UV protection and weathering resistance, color stability, low heat buildup, and scratch and graffiti resistance.

## CUSTOM COLORS

Custom colors available, please contact us at [info@ezpvcna.com](mailto:info@ezpvcna.com) to request a sample and/or see more colour options.



## STOCK COLORS



SUNBLEACHED  
OAK



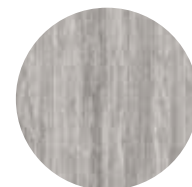
GRAY OAK



BROWN OAK



TOFFEE



BARNBOARD  
GREY



BEACHWOOD  
GREY



HARVEST  
WALNUT



MODERN  
WALNUT



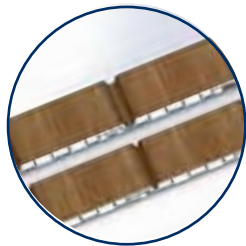
CHARRED BLACK



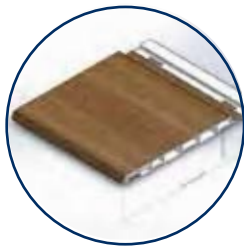
BRUSHED  
METALLIC

CONTACT US FOR MORE AVAILABLE COLORS

# EXTERIOR PARTS



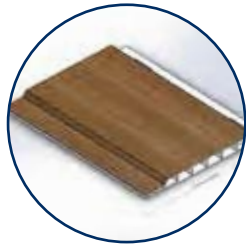
1 PANEL, 2 LOOKS  
U-CHANNEL, V-GROOVE



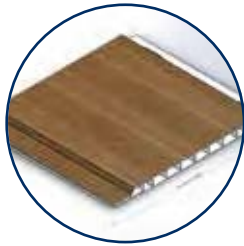
6" EXTERIOR WALL  
12', 20', 30' LENGTHS



12" EXTERIOR PANEL  
SMOOTH PROFILE,  
SEAMLESS FINISH  
12' & 20' LENGTHS



4" CEILING, &  
SOFFIT PANEL  
12' & 20' LENGTHS



6" CEILING, &  
SOFFIT PANEL  
12', 20', 30' LENGTHS



J TRIM SOFFIT  
PVC: 12' & 20' LENGTHS



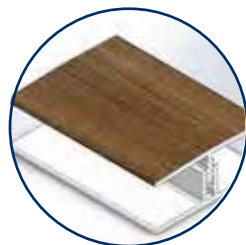
2PC. OUTSIDE CORNER  
SIDING  
\* PVC: 12' & 20' LENGTHS



2 PC. FINISHING TRIM  
SIDING  
\* PVC: 12' & 20' LENGTHS



2 PC. FINISHING TRIM  
SOFFIT/12" PANEL  
PVC: 12' & 20' LENGTHS



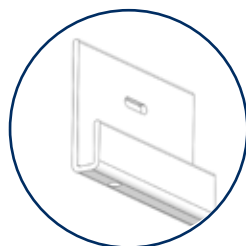
2 PC. H TRIM  
SIDING  
PVC: 12' LENGTHS



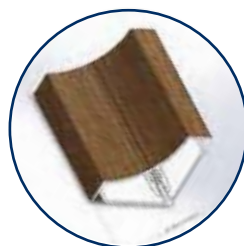
F TRIM  
SOFFIT  
PVC: 12' LENGTHS



4" & 6" PERFORATED  
SOFFIT  
12', 20' LENGTHS



SIDING  
STARTER STRIP  
\* PVC: 12', 20' LENGTHS

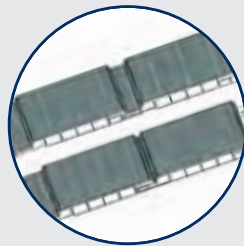


2PC CROWN MOLD  
EXTERIOR OR INTERIOR  
PVC: 10' LENGTH

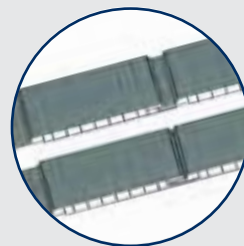
\* THESE TRIMS  
AVAILABLE IN  
ALUMINUM, PVC  
OR PVC/ALUM  
COMBINATION IN  
12', 20' LENGTHS

CUSTOM LENGTHS AVAILABLE

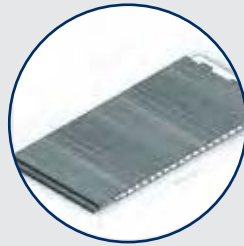
# INTERIOR PARTS



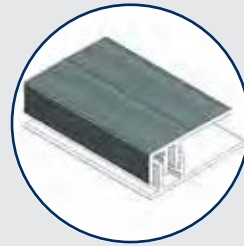
4" CEILING &  
WALL PANEL  
U-CHANNEL, V-GROOVE  
12', 20' LENGTHS



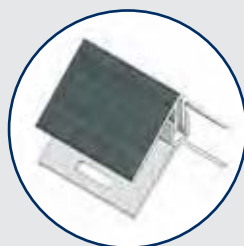
6" CEILING &  
WALL PANEL  
U-CHANNEL, V-GROOVE  
12', 20', 30' LENGTHS



12" INTERIOR PANEL  
SMOOTH PROFILE,  
SEAMLESS FINISH  
12', 20' LENGTHS



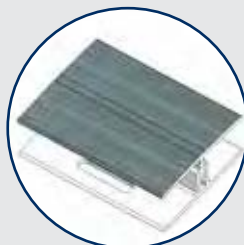
2PC. FINISHING TRIM  
PVC: 12', 20' LENGTHS



OUTSIDE CORNER  
PVC: 12', 20' LENGTHS



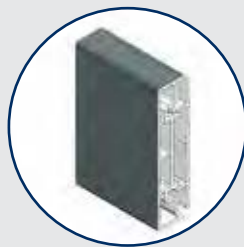
J TRIM  
PVC: 12', 20' LENGTHS



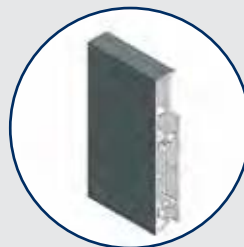
2PC. H TRIM  
PVC: 12' LENGTHS



F TRIM  
PVC: 12' LENGTHS



3" CASING  
PVC: 12' LENGTHS



4" BASEBOARD  
PVC: 12' LENGTHS



# THE CHAMCLAD ADVANTAGE

## TESTING

- ✓ CCMC 14323-R
- ✓ ASTM D696-16
- ✓ ASTM D635-18
- ✓ CAN/CGSB - 41.24.-95
- ✓ CAN/ULC S102-2018
- ✓ ASTM G154-16
- ✓ ASTM D790
- ✓ ASTM G155
- ✓ ASTM E330/E330-14  
PROCEDURE B Q50<0.85
- ✓ RILEM TC -127-MS  
(ACID RAIN)

- ✓ UV Protected
- ✓ North American Manufactured from 100% Recycled PVC
- ✓ LEED Compliant
- ✓ 25 Year Warranty
- ✓ Impervious to Water Absorption, Bacteria and Mold
- ✓ Low Maintenance
- ✓ Easy to Install , no special tools required, lightweight
- ✓ High Impact Resistance
- ✓ Short Lead Times
- ✓ Canada and US Distribution
- ✓ One Profile gives two looks V-Groove and U-Channel



3955 W Mesa Vista Ave Suite 8  
 Las Vegas • Nevada 89118 • USA  
 800-602-4441 or 702-205-9658  
**WWW.EZPVCNA.COM**



**SCAN HERE**  
 WALL & SOFFIT  
 INSTALL VIDEOS

**WWW.EZPVCNA.COM**

**WWW.CHAMCLAD.COM**