

EZ LINER™

Vehicle Wash PVC Panels

“Car & Truck Wash Wall Coverings”



EZ Liner™ PVC Interlocking Panel is an ideal choice for the rigorous requirements of car wash bay walls and ceiling coverings. The highly moisture-resistant PVC panel is well suited to wet environments and will not support mildew or mold growth. With a strong resistance to harsh chemicals, EZ Liner™ PVC panels are impervious to most car and truck wash detergents, soaps, waxes, and foams.

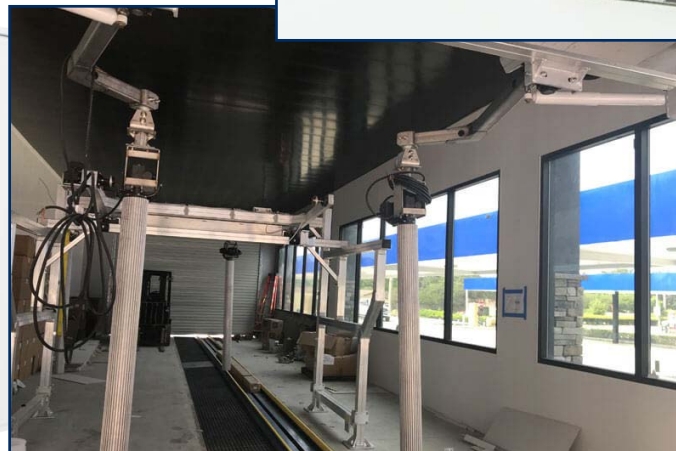
Easy to clean, EZ Liner™ panel's white, reflective finish will brighten a vehicle wash facilities overall appearance and optimize the effects of the building's interior lighting. Since these carwash wall panels never need to be painted, coated, or otherwise sealed, wash facility maintenance costs are reduced considerably. Cost effective to other construction methods, EZ Liner™ PVC is a lightweight car and truck wash panel that can easily be installed either vertically or horizontally.

If you need a vehicle wash panel that is extremely durable and will hold up to years of wash environment abuse, **EZ Liner™ PVC ceiling and wall panel has your commercial car wash project covered!**



Why is EZ Liner™ ideal for the Car & Truck Wash Industry?

- **Moisture resistant**, prevents mold and mildew
- **Chemical resistant**, impervious to wash chemicals
- **Bright white finish** evenly reflects interior lighting
- **Impact resistant**, able to withstand carwash abuse
- **Minimal maintenance**, no painting or refinishing
- **Cost effective** to other construction methods



EZ Liner™ Trim System
Available to Make Your
Installation Effortless!



Car Washes | Truck Washes | Equipment Wash Bays

EZ Liner™ PVC Interlocking Liner Panels

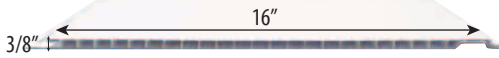

EZ Liner™ PVC Interlocking Panels are ideal wherever you need a smooth finish that is easy-to-clean, low maintenance, hygienic and/or abuse resistant. Perfect for wall and/or ceiling applications, EZ Liner's™ unique all-weather interlocking design allows for panel expansion and contraction due to temperature change for an always seamless appearance.

The panel's corrosion resistant surface is durable and highly resistant to, moisture, and most chemicals. EZ Liner™ PVC panels are light in weight, easy to work with, and require no special training or tools to install. The panels tongue-and-groove interlocking system makes both vertical and horizontal installation quick and easy, helping save on install costs.


Made from 100% virgin lead free material, EZ Liner™ panels are safe to work with using normal construction practices and the waste material is recyclable. Designed for the most demanding applications, EZ Liner™ PVC Interlocking Liner Panels meet and/or exceed modern hygienic construction and statutory building codes.



PRODUCT SPECIFICATIONS

Profile:		
Panel Width:	16" with 3/8" Overall Thickness (Custom Widths Available)	
Panel Lengths:	8', 10', 12', 16', & 20' (Custom Lengths Available)	
Color:	White (Special Order Colors Available)	
Fire Rating:	Class A Fire & Smoke Rating	
Hygienic Rating:	Meets FDA & CFIA Requirements	
Warranty:	10-Year Limited Warranty	

EZ LINER™ PVC TRIM SYSTEM



J-Trim **Drip Trim** **Sill Trim** **Multi-H** **Inside Corner Cove**

Crown Cap & Crown Base **2 pc H-Trim** **2pc Multi-Corner** **45-Trim** **90-Trim**

EZ Liner™ PVC comes with a full line of trims to help make your installation effortless and improve the look of finished interior walls and ceilings.



Distributed and Fabricated By:

AmeriLux International is a leading distributor & fabricator of a broad range of multiwall polycarbonate, corrugated polycarbonate, PVC sheet and liner panels.

Call today for complete product information and/or for a distributor in your area:
P: 888-602-4441
F: 920-336-9301

Or visit our website:
www.ameriluxinternational.com




Discover the Strength and Durability of EZ Liner™ PVC Interlocking Panels!