

ChamClad



**INTERIOR &
EXTERIOR
WALLS, SOFFIT,
CEILING & TRIM**

EZPVCNA.COM
for more information contact
us at info@ezpvcna.com



1212 Enterprise Drive, De Pere, WI 54115
Phone: 888-602-4441 | www.AmeriLux.com

THE CHAMCLAD WAY

ChamClad exterior and interiors walls, soffit and ceiling panels are transforming architectural design and building practices across North America.

Our Canadian made product is designed to be the ideal product choice for applications requiring durability, low maintenance and easy installation. With no special tools required for install.

Our films have 35 years proven performance in the EXTERIOR industry and offer the most realistic wood grains, metallic, and anodized finishes on the market. Additional benefits include superior UV protection and weathering resistance, color stability, low heat buildup, and scratch and graffiti resistance.

CUSTOM COLORS

Custom colors available, please contact us at info@ezpvcna.com to request a sample and/or see more colour options.



STOCK COLORS



SUNBLEACHED
OAK



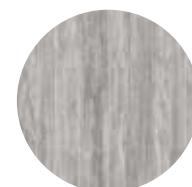
GRAY OAK



BROWN OAK



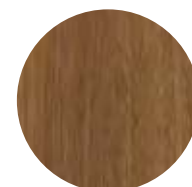
TOFFEE



BARNBOARD
GREY



BEACHWOOD
GREY



HARVEST
WALNUT



MODERN
WALNUT



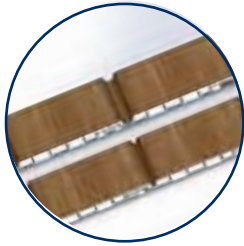
CHARRED BLACK



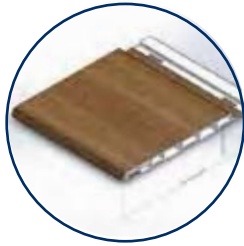
BRUSHED
METALLIC

CONTACT US FOR MORE AVAILABLE COLORS

EXTERIOR PARTS



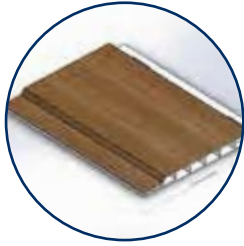
1 PANEL, 2 LOOKS
U-CHANNEL, V-GROOVE



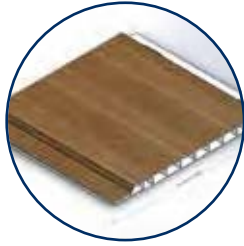
6" EXTERIOR WALL
12', 20', 30' LENGTHS



12" EXTERIOR PANEL
SMOOTH PROFILE,
SEAMLESS FINISH
12' & 20' LENGTHS



4" CEILING, &
SOFFIT PANEL
12' & 20' LENGTHS



6" CEILING, &
SOFFIT PANEL
12', 20', 30' LENGTHS



J TRIM SOFFIT
PVC: 12' & 20' LENGTHS



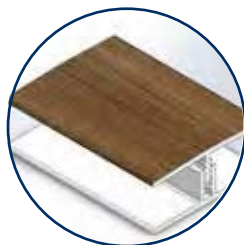
2PC. OUTSIDE CORNER
SIDING
* PVC: 12' & 20' LENGTHS



2 PC. FINISHING TRIM
SIDING
* PVC: 12' & 20' LENGTHS



2 PC. FINISHING TRIM
SOFFIT/12" PANEL
PVC: 12' & 20' LENGTHS



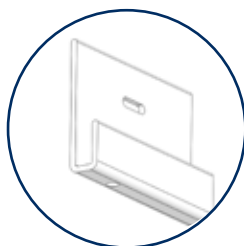
2 PC. H TRIM
SIDING
PVC: 12' LENGTHS



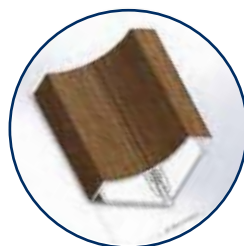
F TRIM
SOFFIT
PVC: 12' LENGTHS



4" & 6" PERFORATED
SOFFIT
12', 20' LENGTHS



SIDING
STARTER STRIP
* PVC: 12', 20' LENGTHS

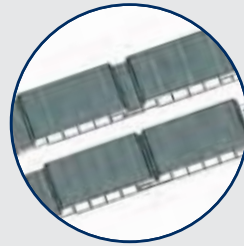


2PC CROWN MOLD
EXTERIOR OR INTERIOR
PVC: 10' LENGTH

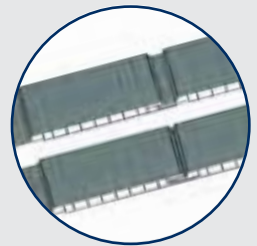
* THESE TRIMS
AVAILABLE IN
ALUMINUM, PVC
OR PVC/ALUM
COMBINATION IN
12', 20' LENGTHS

CUSTOM LENGTHS AVAILABLE

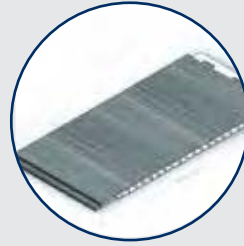
INTERIOR PARTS



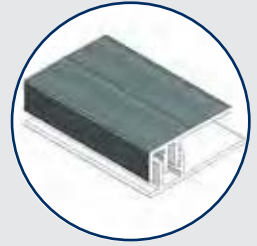
4" CEILING &
WALL PANEL
U-CHANNEL, V-GROOVE
12', 20' LENGTHS



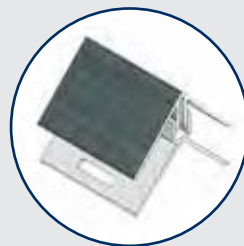
6" CEILING &
WALL PANEL
U-CHANNEL, V-GROOVE
12', 20', 30' LENGTHS



12" INTERIOR PANEL
SMOOTH PROFILE,
SEAMLESS FINISH
12', 20' LENGTHS



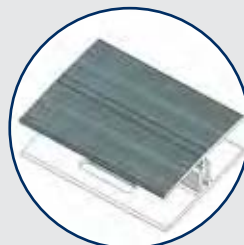
2PC. FINISHING TRIM
PVC: 12', 20' LENGTHS



OUTSIDE CORNER
PVC: 12', 20' LENGTHS



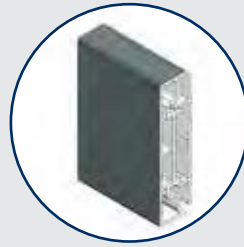
J TRIM
PVC: 12', 20' LENGTHS



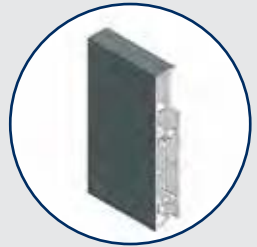
2PC. H TRIM
PVC: 12' LENGTHS



F TRIM
PVC: 12' LENGTHS



3" CASING
PVC: 12' LENGTHS



4" BASEBOARD
PVC: 12' LENGTHS



THE CHAMCLAD ADVANTAGE

TESTING

- ✓ CCMC 14323-R
- ✓ ASTM D696-16
- ✓ ASTM D635-18
- ✓ CAN/CGSB - 41.24.-95
- ✓ CAN/ULC S102-2018
- ✓ ASTM G154-16

- ✓ ASTM D790
- ✓ ASTM G155
- ✓ ASTM E330/E330-14
PROCEDURE B Q50<0.85
- ✓ RILEM TC -127-MS
(ACID RAIN)

- ✓ UV Protected
- ✓ North American Manufactured from 100% Recycled PVC
- ✓ LEED Compliant
- ✓ 50 Year Warranty
- ✓ Impervious to Water Absorption, Bacteria and Mold
- ✓ Low Maintenance
- ✓ Easy to Install , no special tools required, lightweight
- ✓ High Impact Resistance
- ✓ Short Lead Times
- ✓ Canada and US Distribution
- ✓ One Profile gives two looks V-Groove and U-Channel



3955 W Mesa Vista Ave Suite 8
 Las Vegas • Nevada 89118 • USA
 800-602-4441 or 702-205-9658
WWW.EZPVCNA.COM



SCAN HERE
 WALL & SOFFIT
 INSTALL VIDEOS

WWW.EZPVCNA.COM

WWW.CHAMCLAD.COM