

EZ LINER™

PVC Interlocking Panels



Ideal Replacement for Conventional Walls & Ceilings

EZ Liner™ Interlocking Panels are ideal wherever you need a smooth finish that is easy-to-clean, low maintenance, hygienic and/or abuse resistant. Perfect for lining interior walls and/or ceilings, owners of agricultural structures, light industrial buildings, cannabis facilities, and vehicle wash bays regularly choose EZ Liner™ PVC interlocking panel.

The EZ Liner™ panel surface is highly resistant to moisture, mold, corrosion, and most chemicals. Light in weight and easy to work with, EZ Liner™ panels require no special training or tools to install. The panel's tongue and groove design makes both vertical and horizontal installation quick and easy. The EZ Liner™ all-weather interlocking system allows for panel expansion and contraction due to temperature change for an always seamless appearance!

Manufactured from 100% virgin PVC material, EZ Liner™ PVC panels are safe to work with using normal construction practices and the waste material is recyclable. Designed for the most demanding applications, EZ Liner™ PVC interlocking liner panels meet and/or exceed modern hygienic construction and statutory building codes.



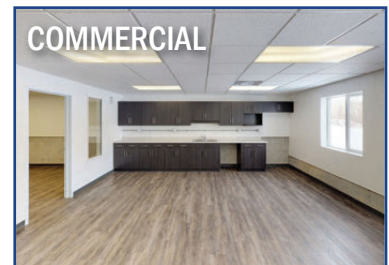
KEY ADVANTAGES:

- Quick & Easy Installation - Install Savings
- EZ Liner™ Trim System - Easy to Install
- All-Weather Interlocking System
- Pre-Slotted Nailing Flange
- Hidden Fasteners Provide Smooth Finish
- Designed for Rigidity & Strength
- Resistant to Moisture & Most Chemicals
- Easy Maintenance - Basic Power Washing
- Class A Smoke & Flame Spread

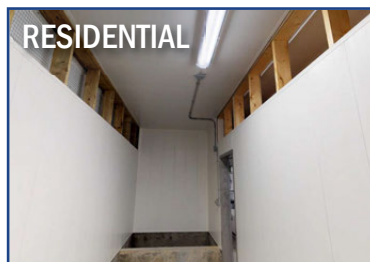
For all Applications



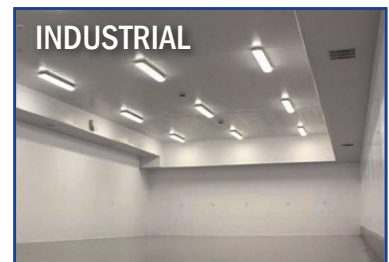
AGRICULTURAL



COMMERCIAL



RESIDENTIAL



INDUSTRIAL



Strong, Durable, Easy Installation

EZ Liner™ PVC Interlocking Panels have your walls and ceilings covered. The EZ Liner™ panel is recommended for a broad range of agricultural, industrial, commercial, and residential interior applications including:

Agricultural

- Dairy Buildings
- Horse Stables
- Poultry Shelters
- Fisheries
- Grain Storage

Industrial

- Food Processing
- Meat Packing
- Laboratories
- Refrigerated Units
- Warehouses

Commercial


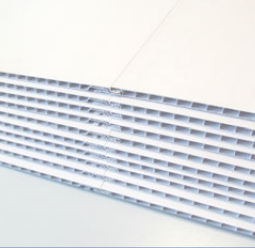

- Car/Truck Washes
- Laundromats
- Office Buildings
- Supermarkets
- Restaurant Kitchens

Residential

- Workshops
- Garages
- Kennels
- Riding Stables
- Urban Bathhouse



PRODUCT SPECIFICATIONS

Profile:	3/8" 			
Panel Colors:	Ultra White*	Panel Widths:	16" & 18"	
	Gray & Black	Panel Width:	18"	
Panel Lengths: (Custom lengths available)	8', 10', 12', 14', 16', 18', 20' & 24' (Some lengths not available in all colors)			
Fire Rating:	Class A Smoke & Flame Spread			
Hygienic Rating:	Meets FDA & CFIA Requirements			
Warranty:	20-Year Limited Warranty			
Max Deflection:	3.278mm Based on 2 lbs. psf. Test imitated insulation weight in typical ceiling application.			

* Ultra white panels and trims are UV rated for exterior applications, '100% exterior grade virgin PVC'

EZ LINER™ PVC TRIM SYSTEM

Stocked in Ultra White



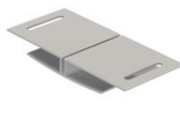
J-Trim



Drip Trim



Sill Trim



Multi-H



Inside Corner Cove



Crown Cap
& Crown Base



2 pc H-Trim



2 pc Multi-Corner



45-Trim



90-Trim

Only select trims available in colors gray and black. Call for more information.

**ALL-WEATHER INTERLOCKING SYSTEM
FOR PANEL EXPANSION & CONTRACTION!**



Distributed and Fabricated By:

AmeriLux International is a leading distributor & fabricator of a broad range of multiwall polycarbonate, corrugated polycarbonate, PVC sheet and liner panels.

Call today for complete product information and/or for a distributor in your area:

P: 888-602-4441

F: 920-336-9301

Or visit our website:

www.ameriluxinternational.com

