

EZ LINER®

Grow Room PVC Panels



Wall & Ceiling Panels for Cannabis Applications

Like most plants, cannabis plants use light to make energy. Light powers bud growth. **EZ Liner® panel's ultra white surface helps reflect light back to your plants.** By reflecting light back to the plants, they will be able to use more of the artificial light produced by your indoor grow lights. Your plants will grow faster and produce bigger yields. More usable light without increased electric energy consumption.

Since these PVC panels never need to be painted 'white', maintenance costs are reduced considerably. EZ Liner® panels are virtually maintenance free – just wipe or wash clean! These moisture resistant panels will not get soft or moldy if they get wet. Cost effective to other construction methods, EZ Liner® is a lightweight wall and ceiling covering that can be easily installed either vertically or horizontally. The panel's hidden fasteners provide a smooth, evenly-reflective finish.

Choosing the right covering for your particular agricultural application is important. If you need a wall or ceiling covering that is extremely durable and will hold up for years, **EZ Liner® PVC Interlocking Liner Panel has your indoor grow space covered!**

Why EZ Liner® Panel?

- Ultra White Surface Reflects Light
- Durable & Impact Resistant
- Low Maintenance & Easy to Clean
- Easy-to-Install Interlocking System
- Class A Smoke & Flame Spread
- Meets FDA & CFIA Requirements
- Iodine Tested



Standard Lengths:
8', 10', 12', 14'
16', 18' & 20'



We will help you GROW your business.

EZ Liner® PVC Interlocking Liner Panels



EZ Liner® PVC Interlocking Panels are ideal for agricultural applications. These reflective wall and ceiling panels increase the effectiveness of artificial lighting. The ultra white surface bounces light back to plants from a wide range of angles. This reflectivity reaches lower portions of the plant and provides bottom buds with light energy for optimum growth.

Designed for the most demanding applications, EZ Liner® PVC panels smooth finish is easy-to-clean, low maintenance, and abuse resistant. The all-weather interlocking system allows panel contraction and expansion due to temperature change, for an always seamless appearance. EZ Liner® panels meet and/or exceed modern hygienic construction and statutory building codes. Choosing the right wall and ceiling covering is important. Invest your money wisely. **Build an efficient and quality indoor grow space with EZ Liner® PVC Interlocking Liner Panels.**

EZ Liner® panels are light in weight, easy to work with, and require no special training or tools to install. The tongue-and-groove interlocking system makes both vertical and horizontal installation quick and easy. Made from 100% virgin lead free material, EZ Liner® panels are safe to work with using normal construction practices and the waste material is recyclable.



PRODUCT SPECIFICATIONS

Profile:	3/8" 	
Panel Width:	16" & 18" width 3/8" Overall Thickness	
Panel Weight:	16": 0.876 lbs per linear foot 18": 0.975 lbs per linear foot	
Panel Lengths:	8', 10', 12', 14', 16', 18' & 20' (Custom lengths available)	
Color:	Ultra White	
Fire Rating:	Class A Smoke & Flame Spread	
Hygienic Rating:	Meets FDA & CFIA Requirements	
Warranty:	20-Year Limited Warranty	
Max Deflection:	3.278mm Based on 2 lbs. psf. Test imitated insulation weight in typical ceiling application.	

* Ultra white panels and trims are UV rated for exterior applications, '100% exterior grade virgin PVC'

EZ LINER® PVC TRIM SYSTEM

Stocked in Ultra White



J-Trim



Drip Trim



Sill Trim



Multi-H



Inside Corner Cove



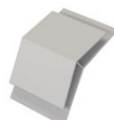
Crown Cap & Crown Base



2 pc H-Trim



2pc Multi-Corner



45-Trim



90-Trim

We will help you **GROW** your business!



Distributed and Fabricated By:

AmeriLux International is a leading distributor & fabricator of a broad range of multiwall polycarbonate, corrugated polycarbonate, PVC sheet and liner panels.

Call today for complete product information and/or for a distributor in your area:

P: 888-602-4441

F: 920-336-9301

Or visit our website:

www.ameriluxinternational.com

